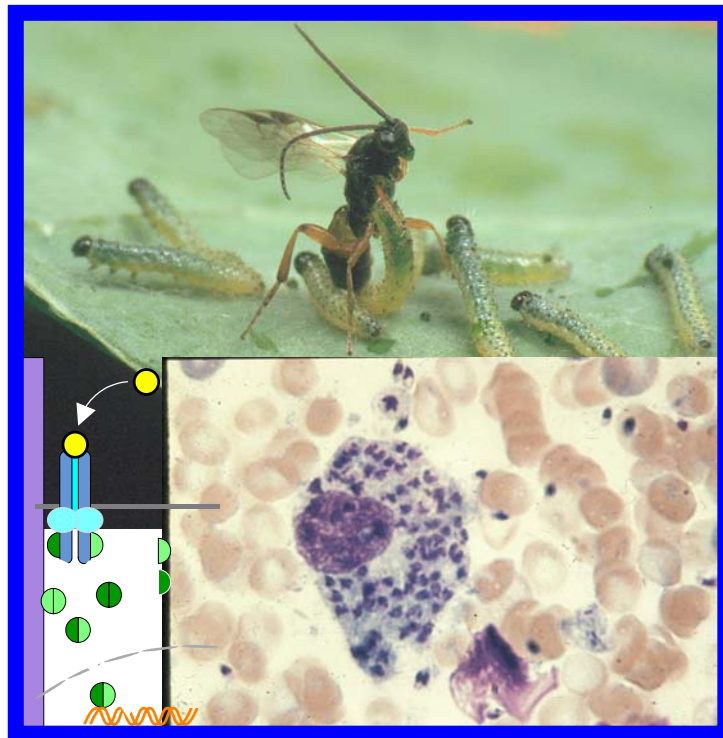


| | Montag, 1.8. | Dienstag, 2.8. | Mittwoch, 3.8. | Donnerstag, 4.8. | Freitag, 5.8. |
|-----------------|---|--|--|--|----------------------|
| 8:15-9:00 | S 4: Multitrophic level interactions (Steidle) | S 4: Breeding of resistant animals (N.N.) | Time for preparation of exam | Time for preparation of exam | Final Discussion |
| 9:15-10:00 | S 4: Coevolution in parasite-host systems (Mackenstedt) | Final Discussion S4 (Steidle, NN) | Time for preparation of exam | Time for preparation of exam | “ |
| 10:15-11:00 | S 4: Resistance genes in plants (Schaller) | Time for preparation of exam | Time for preparation of exam | exam | Departure |
| 11:15-12:00 | S 4: Breeding of resistant plants (Pfitzner) | Time for preparation of exam | Visit of Hohenheim Castle meetingpoint: in front of the Mensa | exam | |
| 12-13:30 | Lunch break | Lunch break | Lunch break | Lunch break | |
| Location | Students lab Biological Chemistry & Nutrition (Basement Bio I, 02.22) | Students lab Biological Chemistry & Nutrition (Basement Bio I, 02.22) | | | |
| 13-14:30 | S 2: Detection of antibodies in students blood ELISA (Böhm, Hahn) | S 2: Activation of signal pathways by pathogens and cytokines (Graeve) | Excursion to Stuttgart (Wilhelma, Staatsgalerie) | | |
| 14:30-16 | ” | ” | “ | 18:00 Fare well barbecue (Phytomedicine) | |

Schedule



Summerschool

**Pathogens, Parasites and their Hosts:
Ecology, molecular interactions and evolution**

July 18– August 5, 2005

Symposium 1 – Pathogen meets host; S 2: Symposium 2: Host resistance; S 3: Symposium 3: Overcoming host defence; S 4: Symposium 4: Coevolution.

Lectures in the morning all take place in HS 21 (Phytomedicine, 03.21)

| | Montag, 18.7. | Dienstag, 19.7. | Mittwoch, 20.7. | Donnerstag, 21.7. | Freitag, 22.7. |
|-----------------|--|---|--|--|---|
| 8:15-9:00 | Welcome (Steidle) Parasites & hosts (Steidle) | S 1: Herbivores (Zebitz) | S 1: Parasitoids (Steidle) | S 1: Bacteria (Böhm) | S 2: Role of cytokines in the resistance to pathogens (Graeve) |
| 9:15-10:00 | Herbivores & host plants (Zebitz) | “ | S 1: Parasites (Mackenstedt, Merli) | “ | “ |
| 10:15-11:00 | Plant pathogens & hosts (Kortekamp) Parasitoids & hosts (Steidle) | S 1: Bacteria & fungi of plants (Kortekamp) | “ | “ | S 2: The pig as model for gut defence (Claus) |
| 11:15-12:00 | Animal pathogens & hosts (Rassow) | S 1: Plant viruses (Pfitzner) | S 1: Bacteria (Böhm) | Final discussion S1: Pathogen meets host (Steidle) | “ |
| 12-13:30 | Lunch break | Lunch break | Lunch break | Lunch break | Lunch break |
| 13-14:30 | Exploration of Campus | S 2: Feeding deterrence of secondary plant compounds (I)(Zebitz, Phytomedicine, 03.21) | S 1: Excursion to Vetlab, Ludwigsburg (Rassow) by public transfer. Bus line 70 is leaving at 13:00 at the bus station next to the Mensa | S 2: Feeding deterrence of plant compounds II (Zebitz, Phytomedicine, 03.21) | S 1: Ecology of tape worm zoonoses (Romig, Parasitology, 02.81) |
| 14:30-16 | 18:00 Wellcome barbecue (Phytomedicine, 03.21) | “ | | S 1: Host finding in parasitic wasps I (Steidle, Students lab Zoology, II. floor, 02.32) | “ |

| | Montag, 25.7. | Dienstag, 26.7. | Mittwoch, 27.7. | Donnerstag, 28.7. | Freitag, 29.7. |
|-----------------|--|---|---|--|--|
| 8:15-9:00 | S 2: Host resistance in plants (Schaller) | S2: Host resistance in animals: An overview (Rassow) | S 2: Host resistance to parasitoids (Steidle) | S 3: Virulence mechanisms of bacteria (Rassow) | S 3: Host adaptations of parasitoids (Zebitz) |
| 9:15-10:00 | “ | “ | Final discussion S2: Host resistance (Steidle, NN) | S 3: Host plant adaptations of herbivores (Zebitz) “ | S 3: Host adaptations of parasites (Mackenstedt, Merli) “ |
| 10:15-11:00 | “ | S 2: Host resistance to parasites (Mackenstedt, Merli) | S 3: Prions (Böhm) | “ | “ |
| 11:15-12:00 | S 2: Pre- and probiotics in pig nutrition (Mosenthin, Bauer) | “ | S 3: Virulence mechanisms of bacteria (Beyer) | S 3: Adaptations of viruses to hosts (Müller) | Final discussion S3: Overcoming host defence (Steidle, N.N.) |
| 12-13:30 | Lunch break | Lunch break | Lunch break | Lunch break | Lunch break |
| Location | Greenhouse, Inst. Genetics (backside of Bio-building, 02.53) | Phytomedicine, Students lab Zoology (II. floor, Bio II) | Students lab Plant Physiology (castle, right wing, 04.25) | Students lab Plant Physiology (castle, right wing, 04.25) | Stables & Lab Animal Husbandry & Breeding (05.41 – 05.44) |
| 13-14:30 | S 2: Tomato mosaic virus in resistant and non-resistant strains (I) (Pfitzner) | S 2: Feeding deterrence of plant compounds (III) (Zebitz) | S 2: Gene induction by wounding or viruses in plants (I) (Schaller, Pfitzner) | S 2: Gene induction by wounding or viruses in plants (II) (Schaller, Pfitzner) | S 2: Analysing defence mechanisms in the porcine gut (Claus) |
| 14:30-16 | “ | S 1: Host finding in parasitic wasps II (Steidle, Monje) | “ | “ | “ |