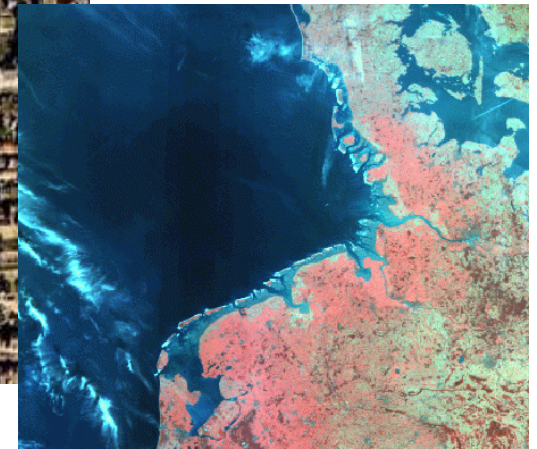
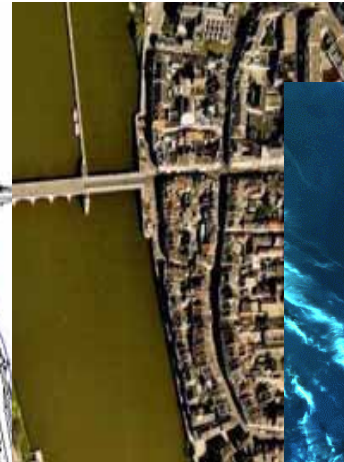
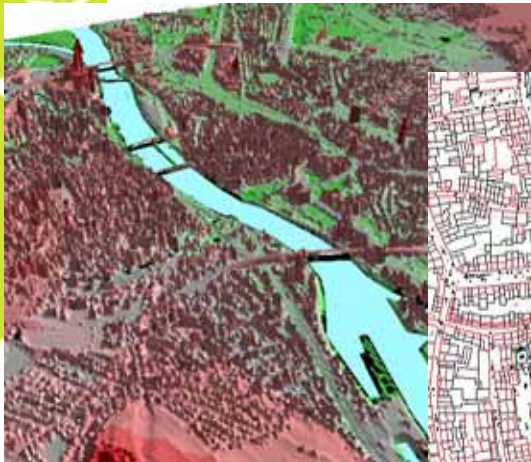


Subject Area
Geo-Information Science



SA Geo-Information Science

SA GIS

Current
activities

T@LAT

ebook

Dragon fly !

Objectives:

- a. Common quality level of GIS - Introduction
- b. Certified courses by ELLS partners
- c. Expert input in Capita Selecta
- d. Student collaboration projects via ICT
- e. Outlook on GIS programs in ELLS network

SA GIS: Current activities

SA GIS

Meetings:

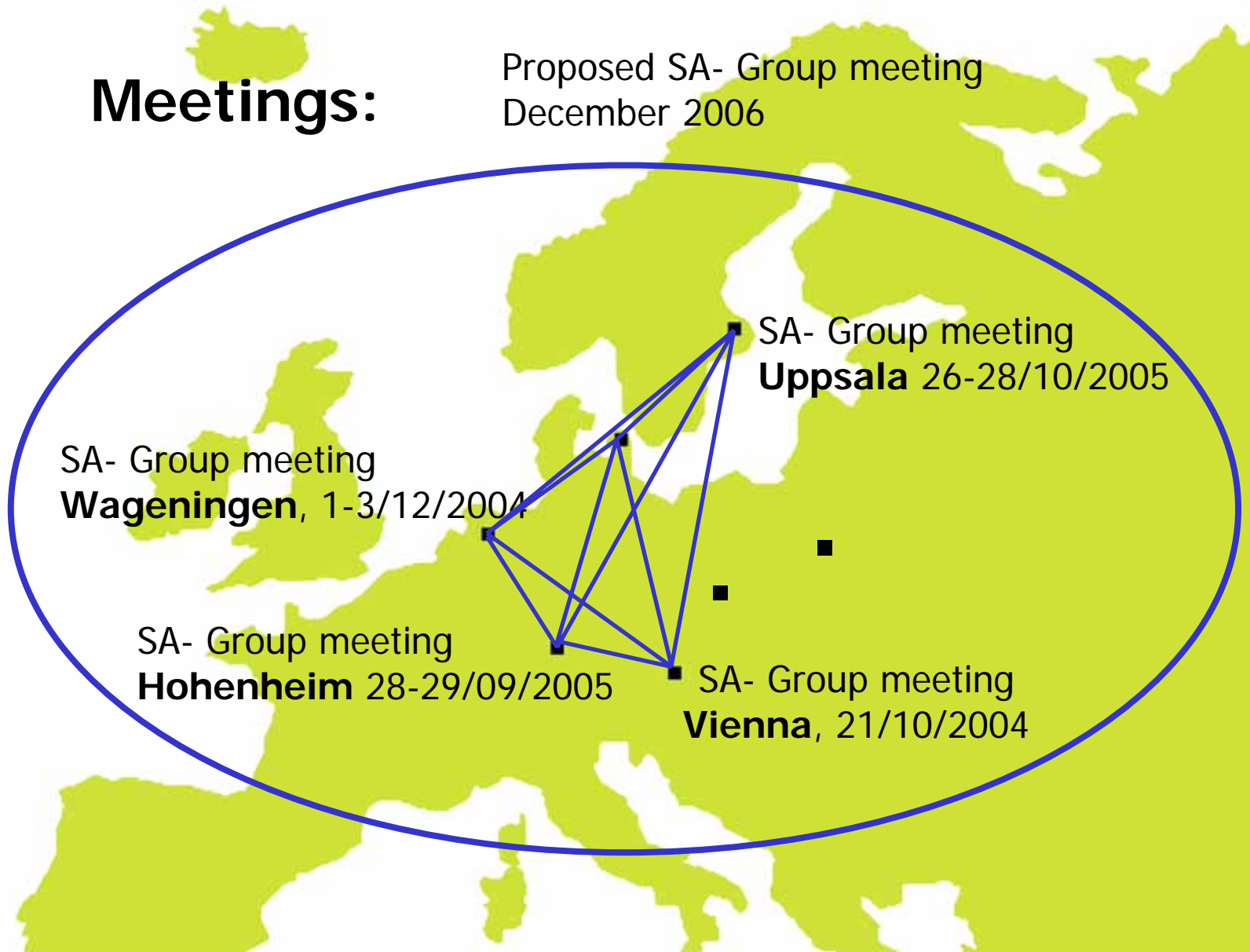
Proposed SA- Group meeting
December 2006

Current
activities

T@LAT

ebook

Dragon fly !



SA GIS: Current activities

SA GIS

Current activities

T@LAT

ebook

Dragon fly !

Proposal Development:

- **LAT** – Project 2004
- **T@LAT** – Strategy Plan 2004 – 2008
- **DART** – Project 2005
- **e -book GIS** – Project 2006
- **Learning on the Edge** – Proposal 2007

SA GIS: Current activities

SA GIS

Student activities:

Current activities

LAT – Learning Apart Together

T@LAT

ebook

Dragon fly !



SA GIS: Current activities

SA GIS

Student activities:

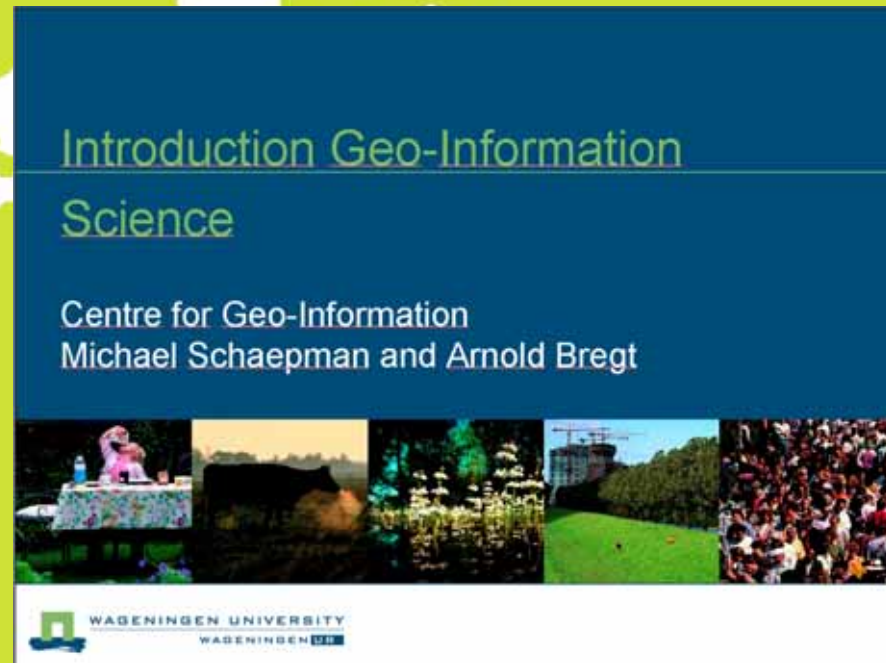
Current activities

Shared GIS introductory course Hohenheim and Wageningen winter semester 2006/2007

T@LAT

ebook

Dragon fly !

The cover of a course material titled 'Introduction Geo-Information Science'. The title is in a light green font on a dark blue background. Below the title, it says 'Centre for Geo-Information' and 'Michael Schaepman and Arnold Bregt'. At the bottom, there is a row of five small images: a pink pig on a table, a dark landscape, a field of flowers, a green field, and a large crowd of people. The Wageningen University logo and name are at the bottom.

SA GIS: Current activities

SA GIS

Current activities

T@LAT

ebook

Dragon fly !

Student activities:

DART – Digital Assessment Repository Track



dart_13 - Netscape

File Edit View Go Bookmarks Tools Window Help

https://edu1.web.wur.nl/grs01/session.dll?TRYSESS=1437274611

Mail AIM Home Radio My Netscape Search Shop Bookmarks Vert

Euroleague
FOR LIFE SCIENCES

dart_13

1 of 8

A cartographic layer is described as all layers (1..n) in a cartographic representation

True
 False

2 of 8

To calculate the land use coverage on bases of administration boundaries one needs to perform a:

Overlay process
 Query process
 Neighborhood process

3 of 8

The output of a data-action model is always a data set in a raster structure as result of an action.

True
 False

SA GIS: Current activities

SA GIS

ebook – European ebook on GIS-Introduction

Current
activities

T@LAT

ebook

Dragon fly !



Problems:

- Sabbatical leave of SA Coordinator R. van Lammeren June – Nov. 2006
- Transfer of the project money to Hohenheim took 3 month
- Project partner of Copenhagen skipped activities
- No project meeting so far
- No contact to SA representatives of Uppsala, Warsaw and Prague

Freiburg University, Institute of Physical Geography

Project startet just this month!

SA GIS: Planned activities in 2007

SA GIS

Current activities

T@LAT

ebook

Dragon fly !

- a. Improve contacts to SA representatives and planning of meetings (incl. breeze)
- b. Development of proposal for Euroleague E-book Series on Geo-Information Science Introduction
- c. Planning of a summer school
- d. Discussion of development of a Double degree Programm in "GIS/RS application in environmental and agricultural studies"
- e. T@LAT: Development of student collaboration projects via ICT

T@LAT: Teaching and Learning Apart Together

SA GIS

Current activities

T@LAT

ebook

Dragon fly !

Learning
Apart
Together



Digital
Assessment
Repository
Track

**European
e-book
on GIS**



Learning on the EDGE
– joint course on quality
of GIS analysis

SA Geo-Information Science

SA GIS

Current activities

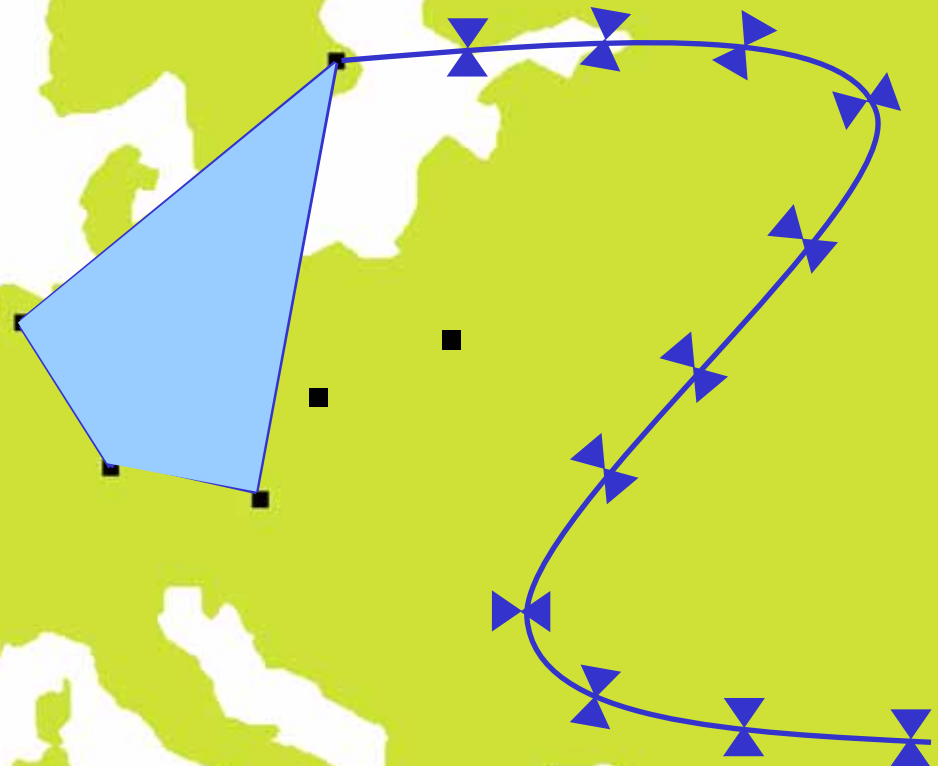
T@LAT

ebook

Dragon fly !



Enjoying T@LAT!



Teaching and Learning Apart Together